



MONTHLY MEMBERSHIP PROGRESS REPORT

District 105BN

Results as of: 05/31/2019

GMT: JOOST PAIJMANS

LOCATION ENGLAND

GMT CA

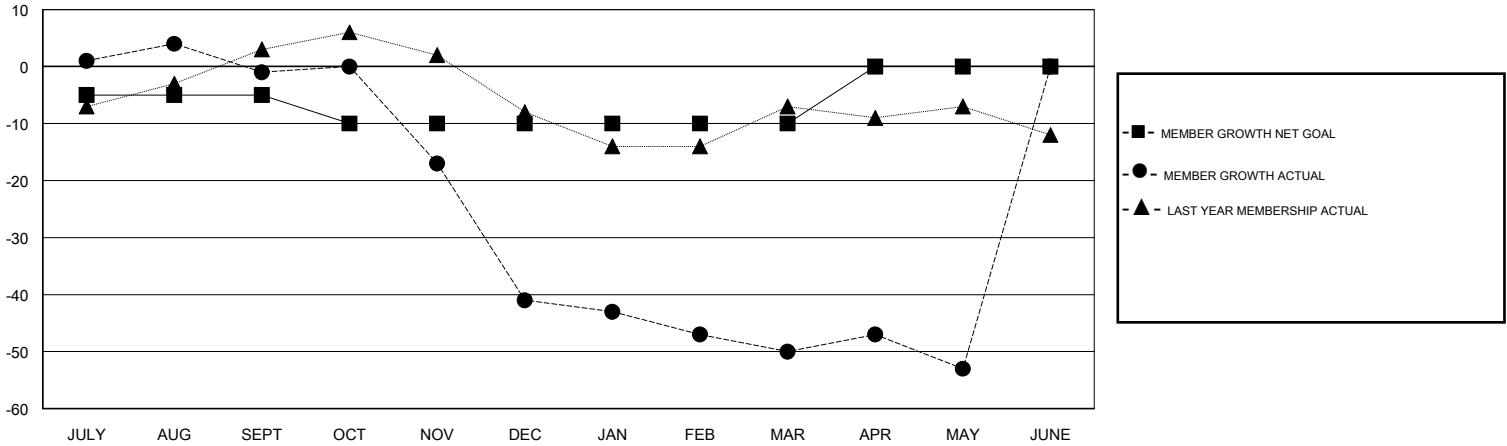
Clubs			
RESULTS FOR 2018-2019			
QUARTER	NEW CLUB GOAL	NEW CLUBS	DROPPED CLUBS
JULY/AUG/SEPT	0	0	0
OCT/NOV/DEC	0	0	3
JAN/FEB/MAR	0	0	1
APR/MAY/JUNE	1	0	0

Members			
RESULTS FOR 2018-2019			
QUARTER	MEMBER GROWTH NET GOAL	MEMBER GROWTH ACTUAL	DROPPED MEMBERS ACTUAL (including transfers)
JULY/AUG/SEPT	-5	18	18
OCT/NOV/DEC	-5	12	50
JAN/FEB/MAR	0	14	19
APR/MAY/JUNE	10	10	13

GOALS AND ACTUAL NEW CLUBS CUMULATIVE



GOALS AND ACTUAL MEMBERS CUMULATIVE



DROPPED CLUBS: 4	22 CLUBS OF 47 ADDED 1 OR MORE NEW MEMBERS	<u>GENDER DISTRIBUTION</u> MALE 491 (70.34%) FEMALE 207 (29.66%) Women Percentage Fiscal Year Goal: 31%
<u>DROPPED MEMBERS</u> DECEASED 13 CLUB CANCELLED 6 OTHER 81 TOTAL 100	CLICK HERE FOR CUMULATIVE MEMBERSHIP DATA	TOTAL FAMILY UNIT MEMBERS 144 FAMILY MEMBERS PAYING HALF DUES 76